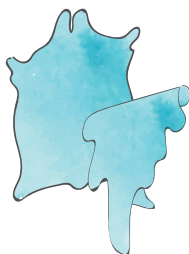


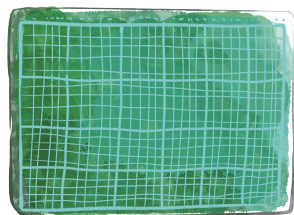
# 工具



紙樣



皮料



剗刀墊



剗刀



筆



劃線器



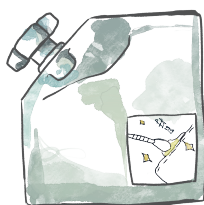
木槌



兩齒菱斬



白膠漿



床面處理劑



棉花棒



砂紙棒



磨邊器



2mm圓斬

//// 皮底

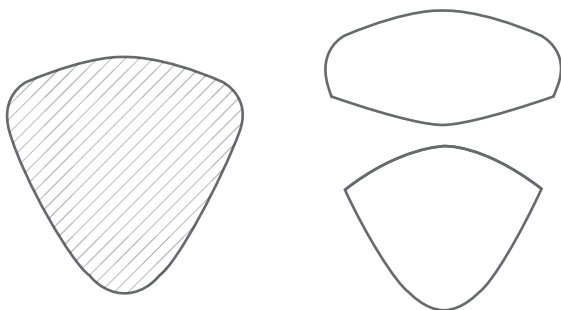
//// 縫線

—— 塗上白膠漿

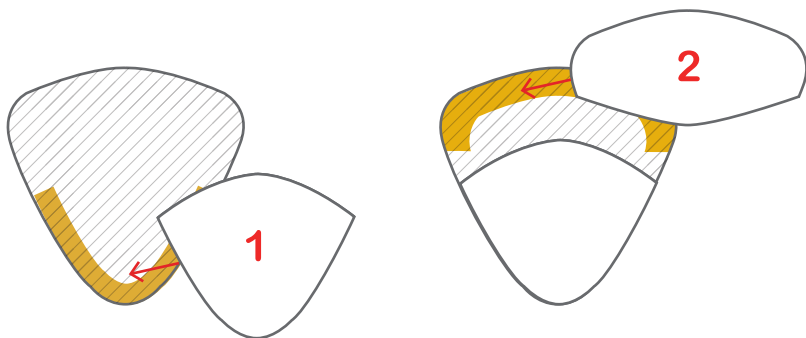
注意：縫線時線的長度約為所縫長度的4倍

# 說明書

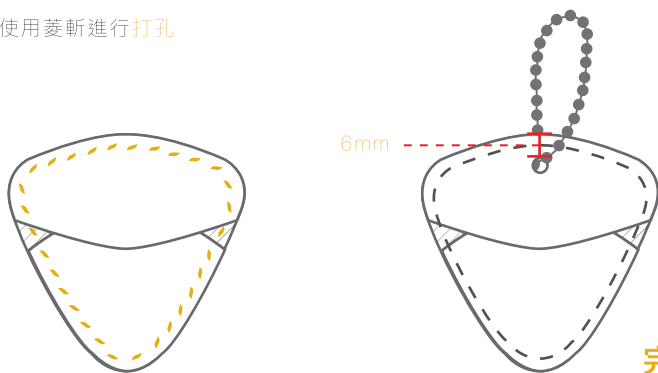
詳細製作方法可以參考港產皮革網頁,《スタート我的皮革生活》中的紙樣用法、打孔、黏合、縫線步驟和修邊方法



1. 準備好紙樣後，有皮底邊位塗上白膠漿，依次序進行黏合

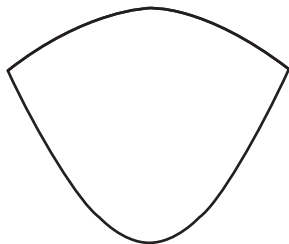
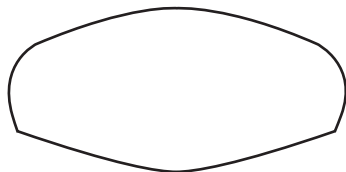
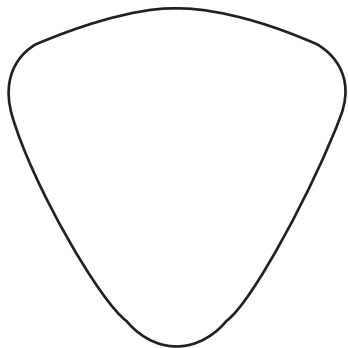


2. 使用菱斬進行打孔

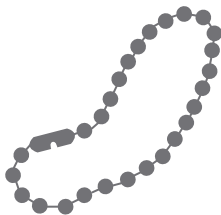


3. 完成縫線，再於距離頂部6mm位置用2mm圓斬打孔，扣上金屬珠鏈

# 紙樣



# 配件



金屬珠鏈